



Atherton Tablelands

THEMED TRAILS

TROPICAL NORTH QUEENSLAND

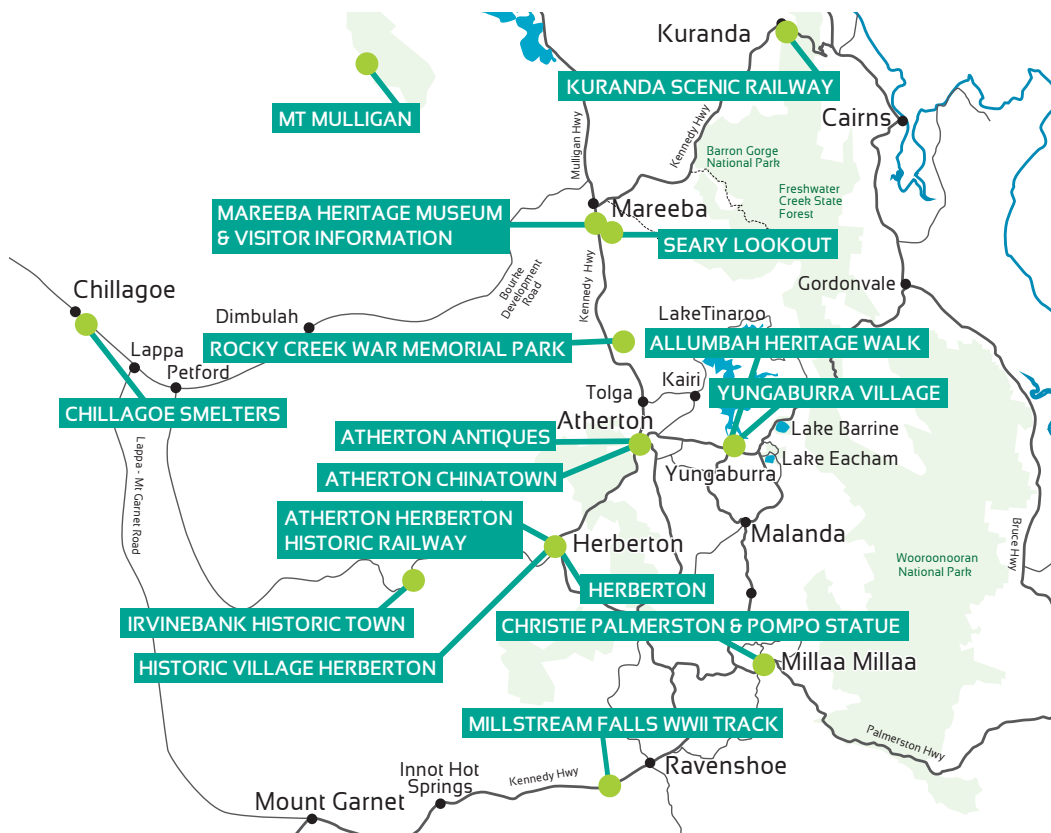
WWW.ATHERTONTABLELANDS.COM.AU



HERITAGE

A drive amid the natural beauty of the Atherton Tablelands is an immersive experience that does so much more than soothing the traveller's soul and delighting the senses. Discover interesting and engaging facts about the region's rich mining heritage, forestry and farming traditions along with newer agricultural industries, and the cultural practices of the local Indigenous people.

The Heritage Trail will take you to pretty, heritage-listed country towns that have retained the links to their past through quaint architecture and friendly, old-fashioned service. Historic villages, living museums, and the sign-posted sites of World War II military encampments all provide a fascinating insight into the history of the Atherton Tablelands, just one hour's pleasant drive from Cairns.





GREAT OUTDOORS

Clean, fresh mountain air, picturesque surroundings and uncrowded, wide-open spaces provide the perfect setting for hiking, cycling and bush walking in this beautiful region. The Great Outdoors Trail includes mountain bike parks with an international reputation, and which offer plenty of tracks suitable for beginners through to the extreme sports fan. Maps are available for cycle routes throughout the region with a choice of

distances and degree of difficulty. Numerous walking trails make the most of the region's national parks and state forests, while some are closer to town centres. These range from gentle rainforest walks to rugged trails suited to experienced hikers. Perhaps the most challenging is the climb to the top of Queensland's highest mountain, Mt Bartle Frere, and one of the most leisurely, is the pleasant shady path around Lake Eacham.

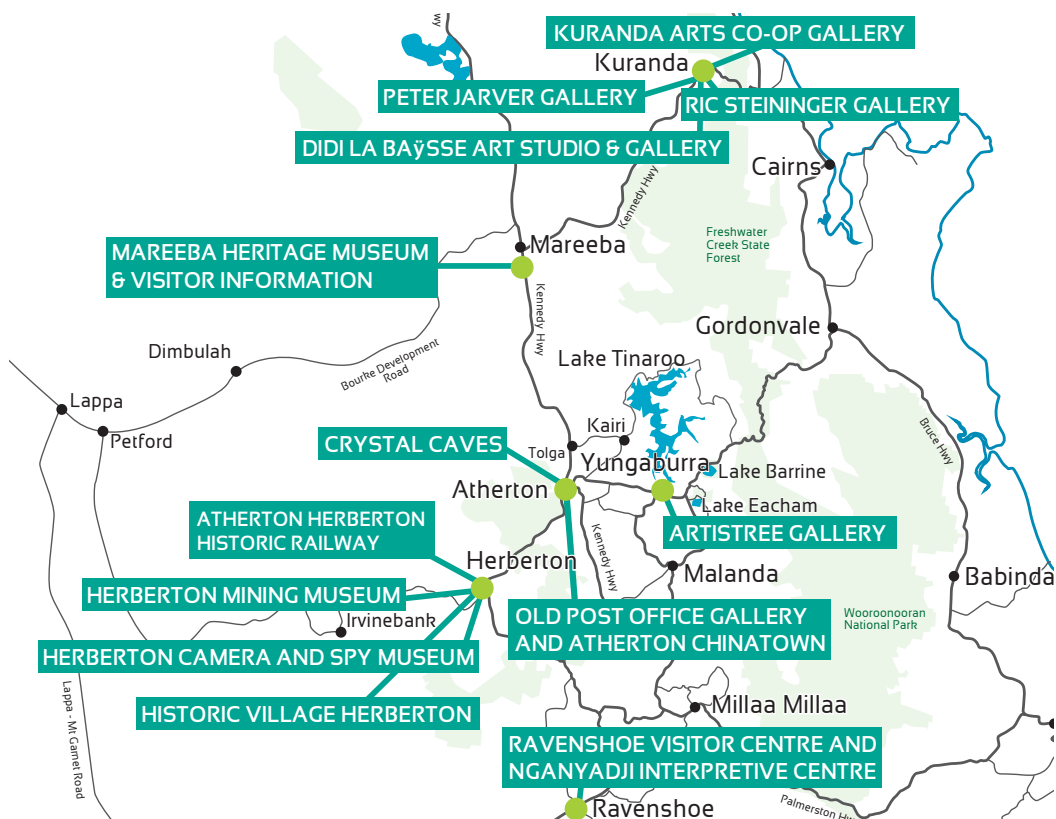




MUSEUMS & GALLERIES

It's no surprise naturally beautiful environments attract artists and the Atherton Tablelands has become a mecca for creative spirits who find inspiration in the peaceful surroundings. Art and the region's cultural and natural history can be found on the idyllic, easy drive Museum & Galleries Trail that meanders through the small villages and towns. Paintings, pottery, traditional crafts, handmade jewellery, furniture

and fashion can all be experienced on this trail. Along the trails, be amazed at the ingenious and "make-do" attitude of the early settlers at a living historic village museum, the enchantment of precious stones in a crystal cave and wonder at the "windows" into the past offered at museums dedicated to mining, pastoral and agricultural industries. Learn about the vital military role the region played in World War II.

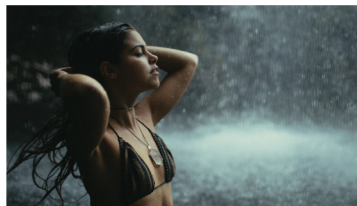




WATERFALLS & WATERWAYS

The Atherton Tablelands is a natural wonderland filled with waterfalls and swimming holes, crater lakes and pristine flowing streams. Lake Tinaroo, built in the 1950s to supply irrigation for agricultural areas to the west, is a magnificent man-made addition to the wealth of waterways. At the southern end is the Waterfall Circuit, which includes beautiful Millaa Millaa Falls. The aqua blue of the ancient crater lakes of Eacham and Barrine are more than 65 metres deep.

Lake Tinaroo is a mecca for waterskiers, barramundi fishers and sailing enthusiasts. Malanda Falls spills under the Malanda-Atherton road bridge just outside town and drops into a pool flanked by picnic facilities. Many B&Bs and accommodation houses are built close to small creeks and dams where you may see platypus. Davies Creek near Mareeba is a popular spot for hiking, swimming and wildlife spotting.

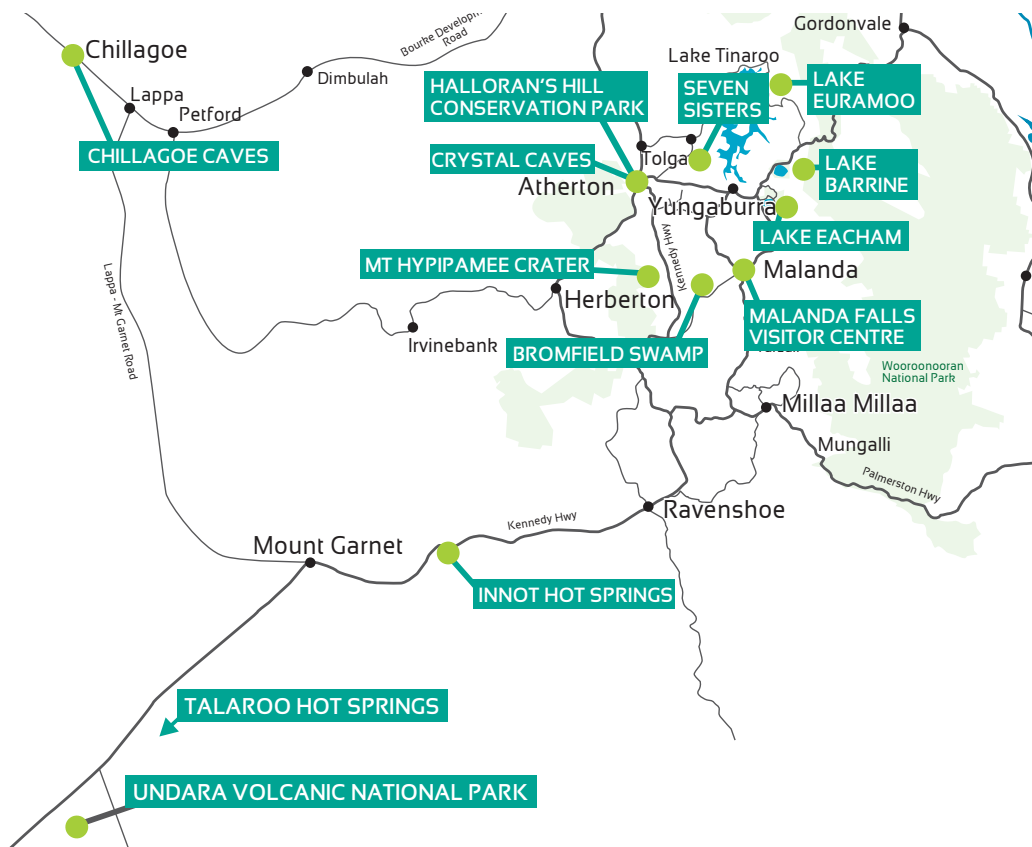




GEOLOGICAL WONDERS

The Geological Wonders Trail provides spectacular and interesting insights into the formation of the Atherton Tablelands over millions of years. Basalt lava from shield volcanoes weathered over the ages to become the rich, red soil that supports this regional food bowl. Local Aboriginal people tell stories of explosive events thousands of years ago

that created the volcanic cones Mt Quincan and the Seven Sisters, the rounded hills near Yungaburra, and the craters which are now the beautiful Lakes Eacham, Barrine and Euramoo. Highlights along the trail include waterfalls, thermal pools, lava tubes, swamps that attract thousands of birds, and rugged ranges.





LANDSCAPES & WILDLIFE

The Atherton Tablelands is paradise for photography buffs and nature lovers. World Heritage-listed forests and the cute and unusual wildlife that call these mountain highlands home are just part of the allure

and magic to be found along the Landscape & Wildlife Trail. Imagine spotting an elusive platypus, a tree kangaroo or a Boyd's forest dragon? The wetlands are also a magnet for birds and birdwatchers alike.

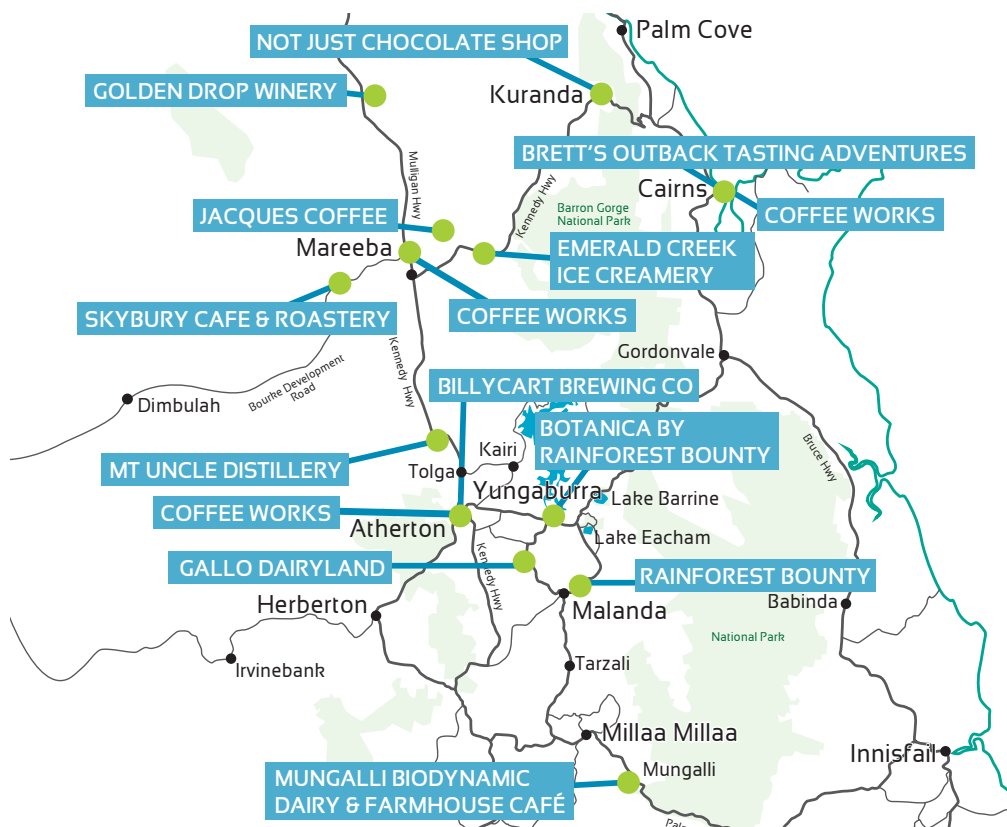




FOOD TRAILS

Food, glorious food, fresh and abundant, grown and prepared locally awaits the traveller with a penchant for experiencing the region from the ground up. Atherton Tablelands' farmers and processors take great pride in the quality of their produce and products, making the Food Trail a must do for anyone serious about sampling the

best the region has to offer. It's been said that even the rich, red soil of the Atherton Tablelands looks good enough to eat. There are farm gate, cosy café and fine restaurant experiences to be had – think tropical fruit and wines, coffee plantations, botanicals distilleries, tropical dairies offering chocolate and cheese, and rainforest fruit products.



DISCOVER THE ATHERTON TABLELANDS THE 'SMART' WAY

With the Discover App you will have up to date information about the Atherton Tablelands at your fingertips – downloaded before leaving home so you don't use up your valuable data.

Available on Apple and Android devices



WWW.ATHERTONTABLELANDS.COM.AU